



Utilization Indicators

Calendar Year 1999

Kenneth A. Samet
Chairman of the Board

Robert A. Malson
President

ABOUT THIS REPORT ON UTILIZATION INDICATORS

The charts in this publication are intended to provide aggregate and comparative data on the utilization trends of the District of Columbia hospital community for calendar year 1999. Trend data for five-year periods have been provided where available.

The source of the data is the District of Columbia Hospital Association's (DCHA) Monthly Utilization Survey and Quarterly Bed Capacity and Census Survey (self-reported by individual hospitals). The graphs in this report describe utilization trends in the aggregate for the District's eleven acute care non-federal hospitals:

- Children's National Medical Center
- Columbia Hospital for Women Medical Center
- District of Columbia General Hospital
- George Washington University Hospital
- Georgetown University Hospital
- Greater Southeast Community Hospital
- Hadley Memorial Hospital
- Howard University Hospital
- Providence Hospital
- Sibley Memorial Hospital
- Washington Hospital Center

Specific utilization data for eighteen District hospitals are provided in table form.

Factors to be considered when analyzing the data include the following:

- Managed care organizations are making their impact felt among District hospital both in terms of decreasing inpatient and emergency room utilization.
- With the increasing demand for outpatient services, hospitals are developing satellite facilities throughout the entire metropolitan area.
- Hospitals continue to form alliances with other hospitals and other providers of different levels of care, including nursing facilities, physician groups, hospices, and community health centers.

Key observations found in the data include:

- From the fourth quarter of 1995 through the fourth quarter of 1999, the District's eleven acute care non-federal hospitals decreased the number of operating beds from 3,458 to 3,072, a decrease of 386 beds or 11.16 percent.
- Average length of stay declined two percent between 1995 and 1999 for District acute care hospitals to 5.93 days.
- Among the District's eleven acute care non-federal hospitals, inpatient utilization showed a steady decline over the past five years. Between 1995 and 1999, admissions decreased 7.59 percent and inpatient days decreased 9.9 percent. During this same period, emergency room visits decreased 2.42 percent.

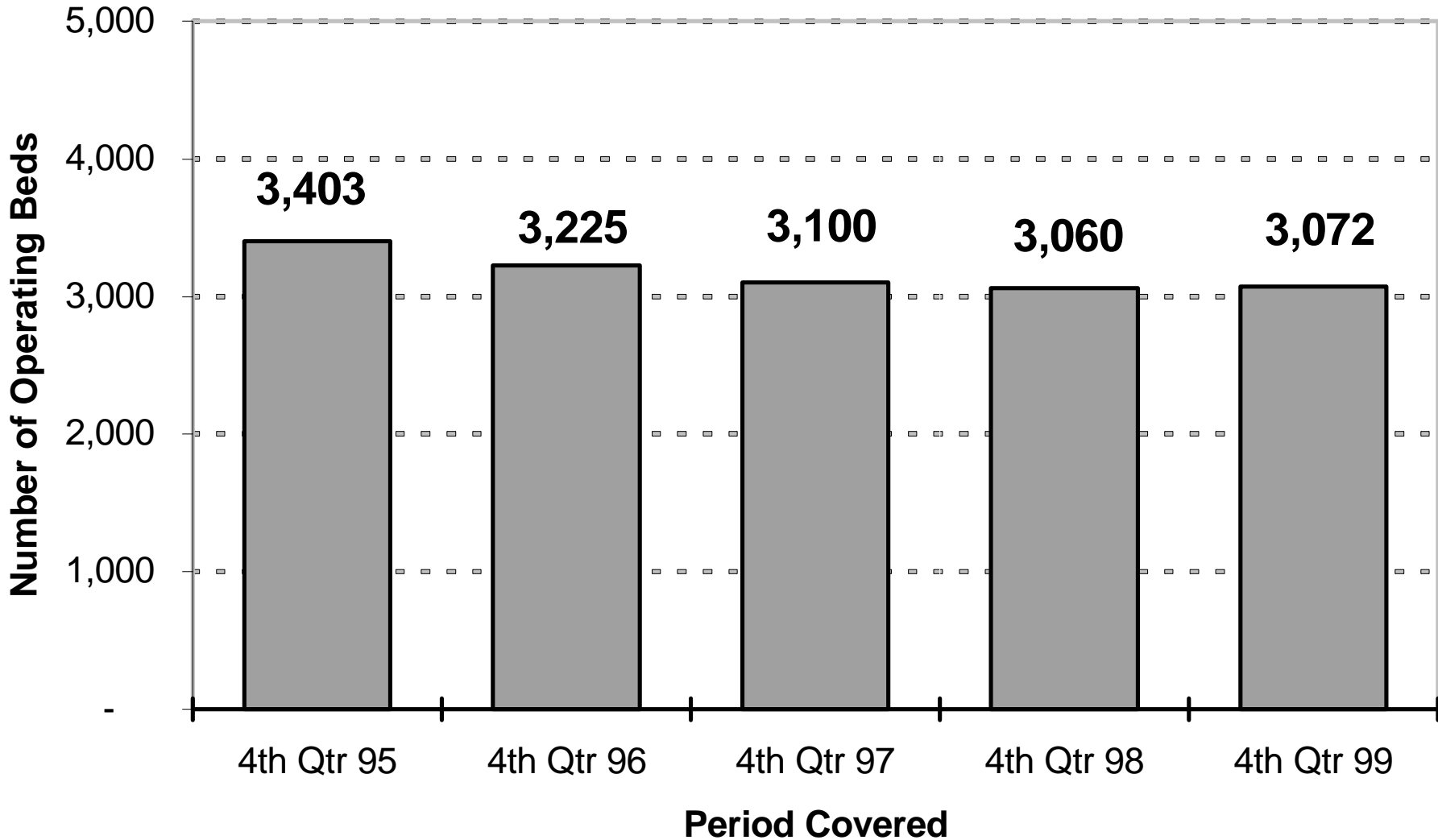
During the next several years, DCHA will be monitoring significant changes in the public and private health care system that have both positive and negative impacts on the utilization of health care services.

TABLE OF CONTENTS

Bed Capacity	Page 1
Change in Operating Beds	Page 2
Occupancy Rate	Page 3
Average Length of Stay	Page 4
Inpatient Admissions	Page 5
Inpatient Days	Page 6
Emergency Room Visits	Page 7
Ambulatory Surgeries	Page 8
Admissions and Patient Days	Page 9
Emergency Room Visits and Ambulatory Surgeries	Page 10
Market Share of Acute Care Hospitals	Page 11
Definition of Terms	Page 12

Operating Bed Capacity

District of Columbia Acute Care Hospitals
Five-Year Trend: 1995 - 1999



Note: Calculations are based on reported utilization figures for the eleven District of Columbia acute care non-federal hospitals.
Source: DCHA Quarterly Occupancy and Bed Capacity Survey

Change in Operating Beds

District of Columbia Hospitals

Five-Year Trend: 1995 - 1999

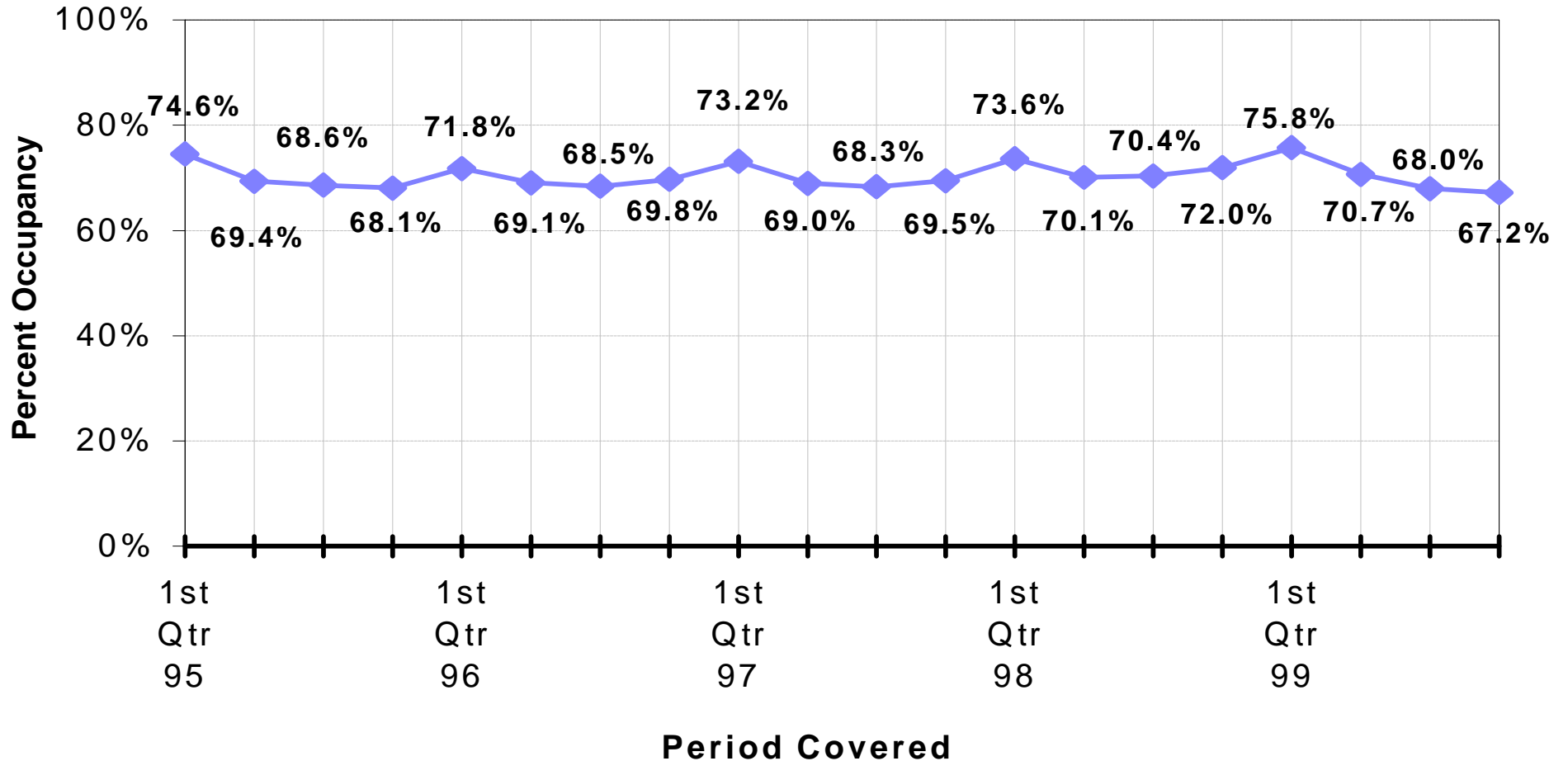
Acute Care Hospitals	Beds In Operation		Percent Change
	4 th Quarter 1995	4 th Quarter 1999	
Children's National Medical Center	188	188	0.00%
Columbia Hospital for Women Medical Center	110	110	0.00%
District of Columbia General Hospital	249	303	21.69%
George Washington University Hospital	289	231	-20.07%
Georgetown University Hospital	353	303	-14.16%
Greater Southeast Community Hospital	363	266	-26.72%
Hadley Memorial Hospital	72	63	-12.50%
Howard University Hospital	369	283	-23.31%
Providence Hospital	316	316	0.00%
Sibley Memorial Hospital	275	218	-20.73%
Washington Hospital Center	874	791	-9.50%
SUBTOTAL	3,458	3,072	-11.16%
Other Hospitals			
MedLINK Hospital at Capitol Hill	N/A	35	N/A
National Rehabilitation Hospital	160	128	-20.00%
Psychiatric Institute of Washington, D.C.	99	104	5.05%
Saint Elizabeths Hospital/CMHS	918	639	-30.39%
Veterans Affairs Medical Center	378	167	-55.82%
Walter Reed Army Medical Center	680	284	-58.24%
SUBTOTAL	2,235	1,357	-39.28%
GRAND TOTAL	5,693	4,429	-22.20%

Source: DCHA Quarterly Occupancy and Bed Capacity Survey

Occupancy Rate

District of Columbia Acute Care Hospitals

Five-Year Trend: 1995 - 1999

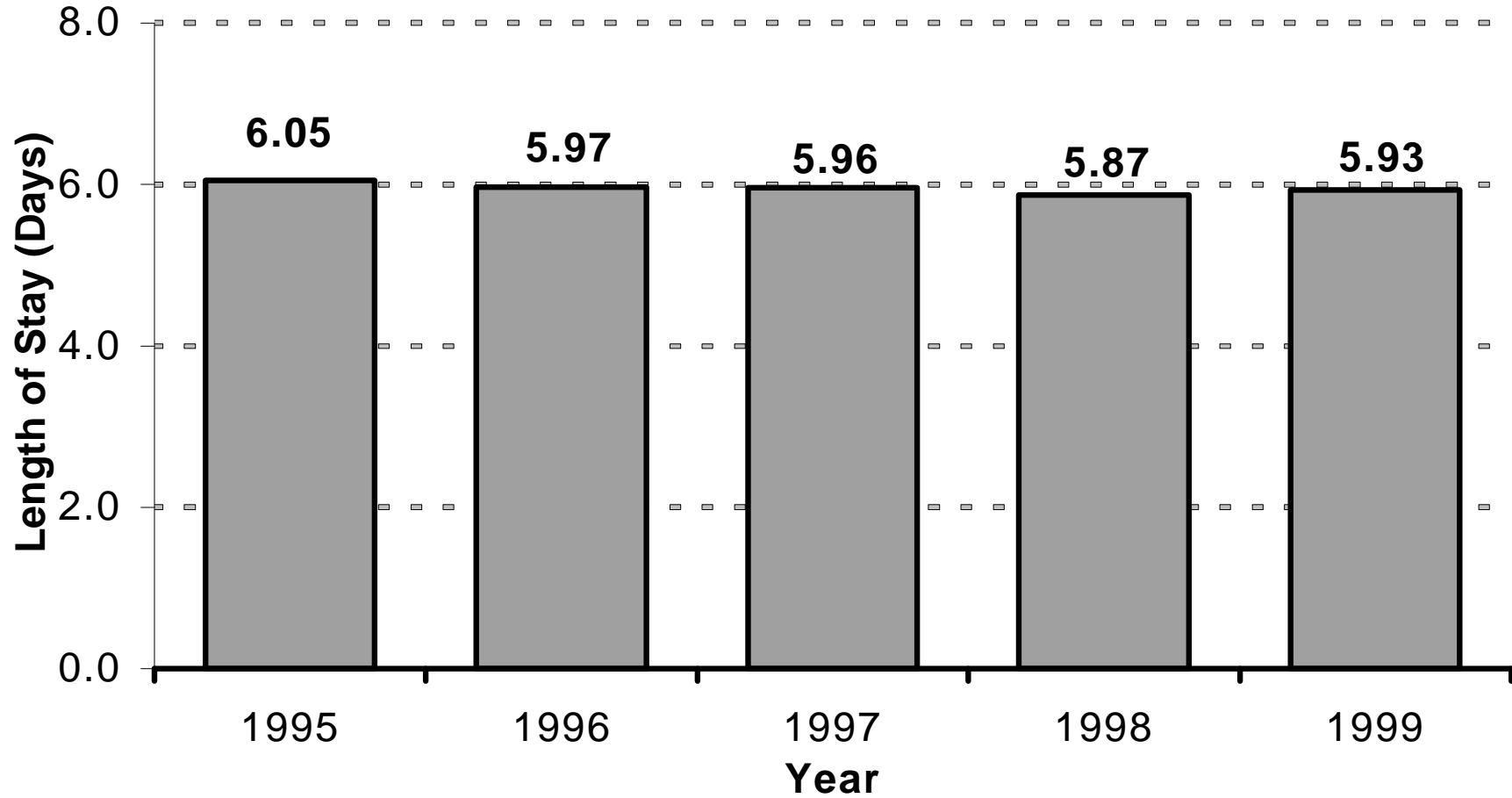


Note: Calculations are based on reporting operating beds and average daily census from the eleven District of Columbia acute care non-federal hospitals.

Source: DCHA Quarterly Occupancy and Bed Capacity Survey

Average Length of Stay

District of Columbia Hospitals Acute Care Hospitals
Five-Year Trend: 1995 - 1999

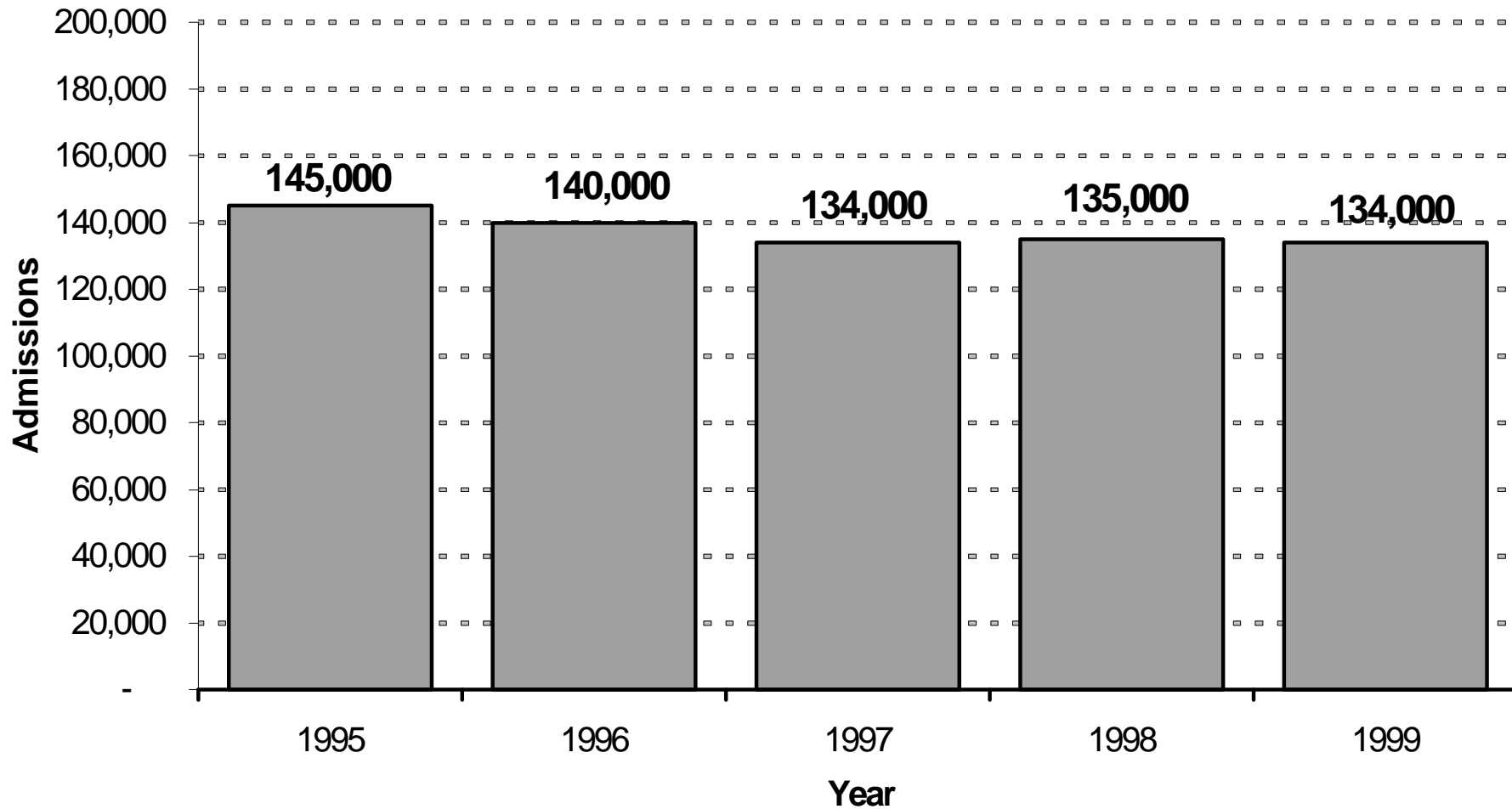


Note: Calculations are based on reported utilization figures for the eleven District of Columbia acute care non-federal hospitals.
Note: "Average Length of Stay" (ALOS) is defined as patient days/admissions. The primary purpose of the ALOS calculation is to display trends and should not be confused with hospital internal ALOS calculations that are defined as patient days/discharges.
Source: DCHA Monthly Utilization Survey

Inpatient Admissions

District of Columbia Acute Care Hospitals

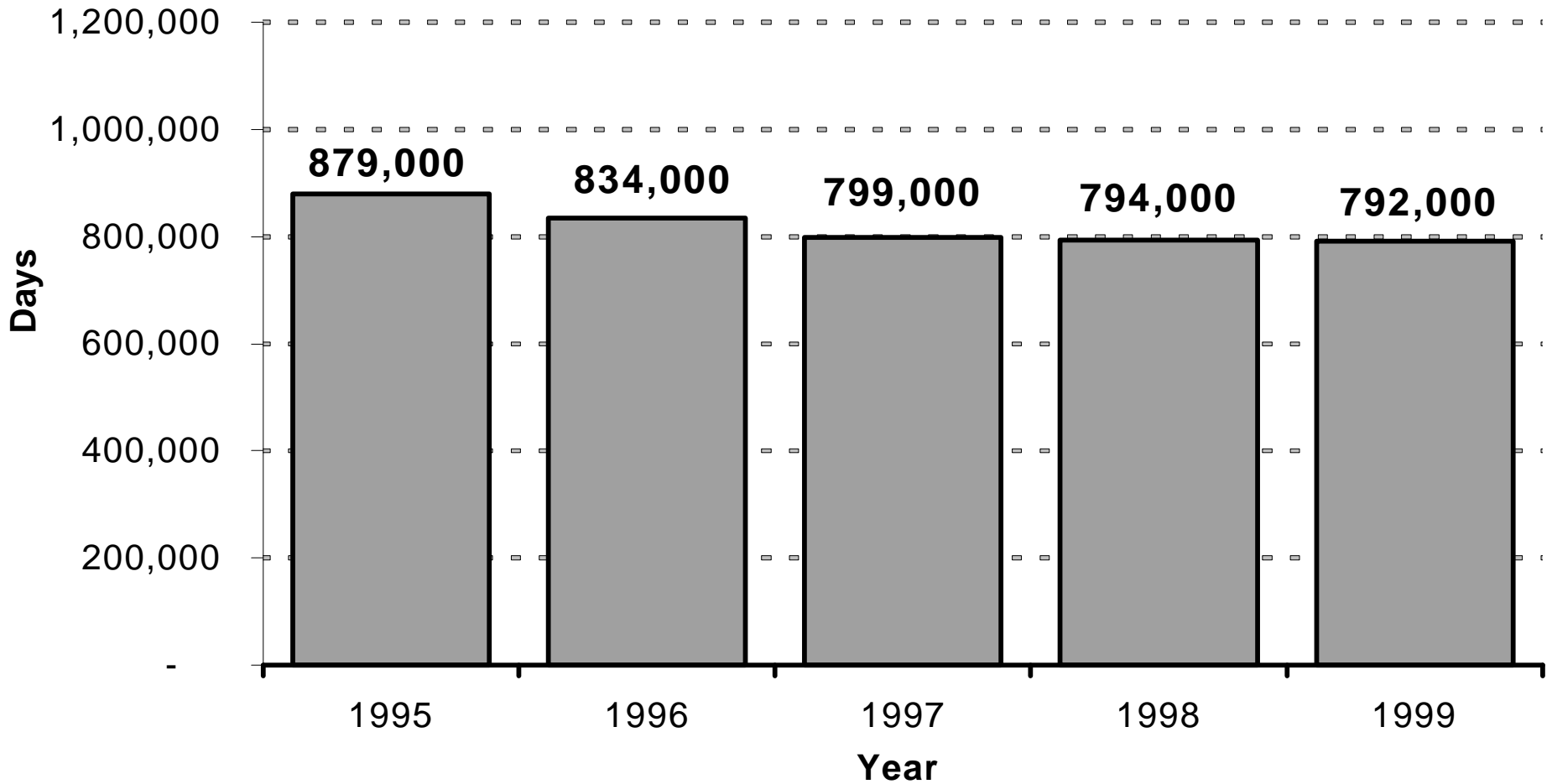
Five-Year Trend: 1995 - 1999



Note: Calculations are based on reported utilization figures for the eleven District of Columbia acute care non-federal hospitals.
Source: DCHA Monthly Utilization Survey

Inpatient Days

District of Columbia Acute Care Hospitals
Five-Year Trend: 1995 - 1999

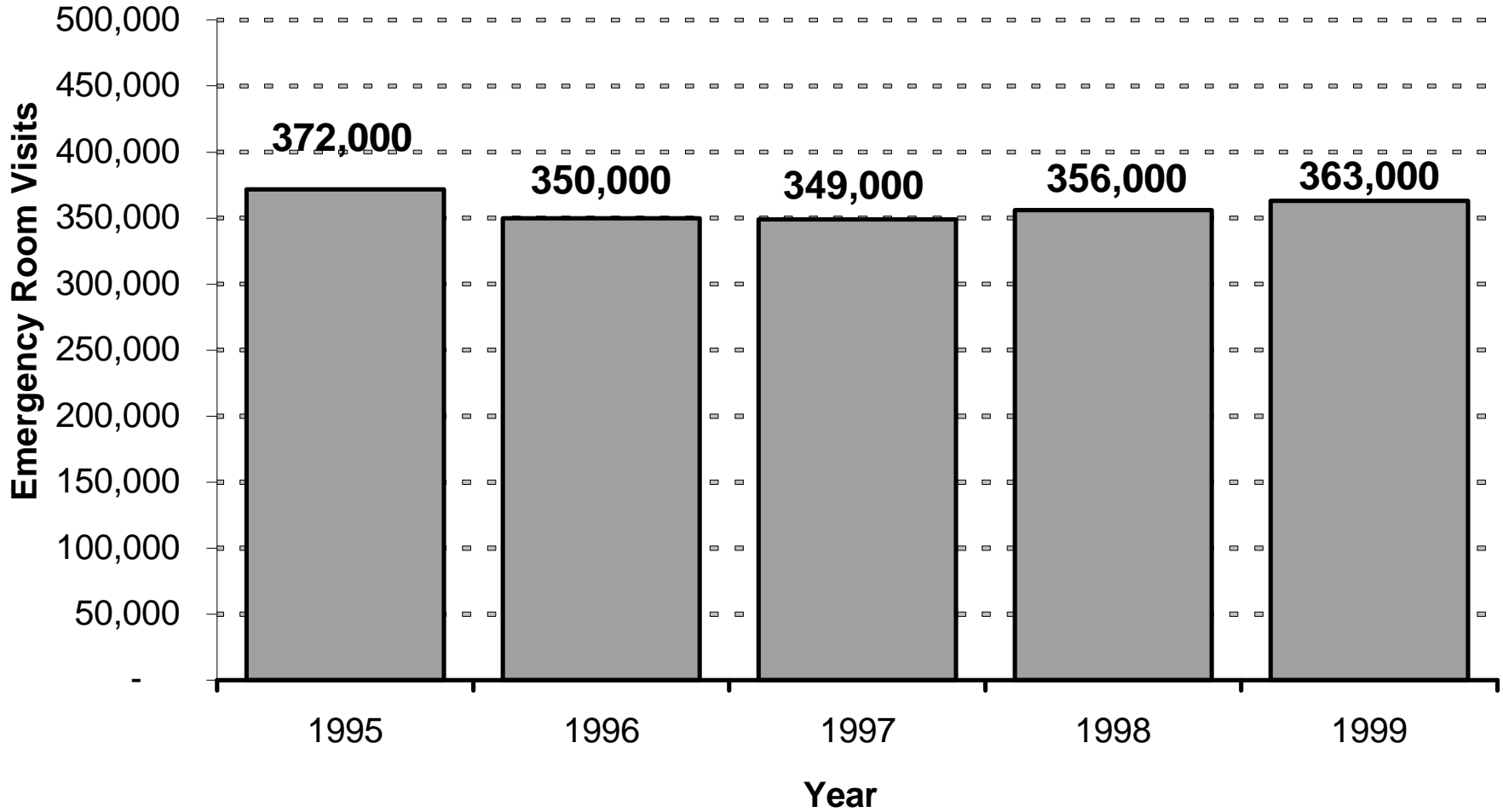


Note: Calculations are based on reported utilization figures for the eleven District of Columbia acute care non-federal hospitals.
Source: DCHA Monthly Utilization Survey

Emergency Room Visits

District of Columbia Acute Care Hospitals

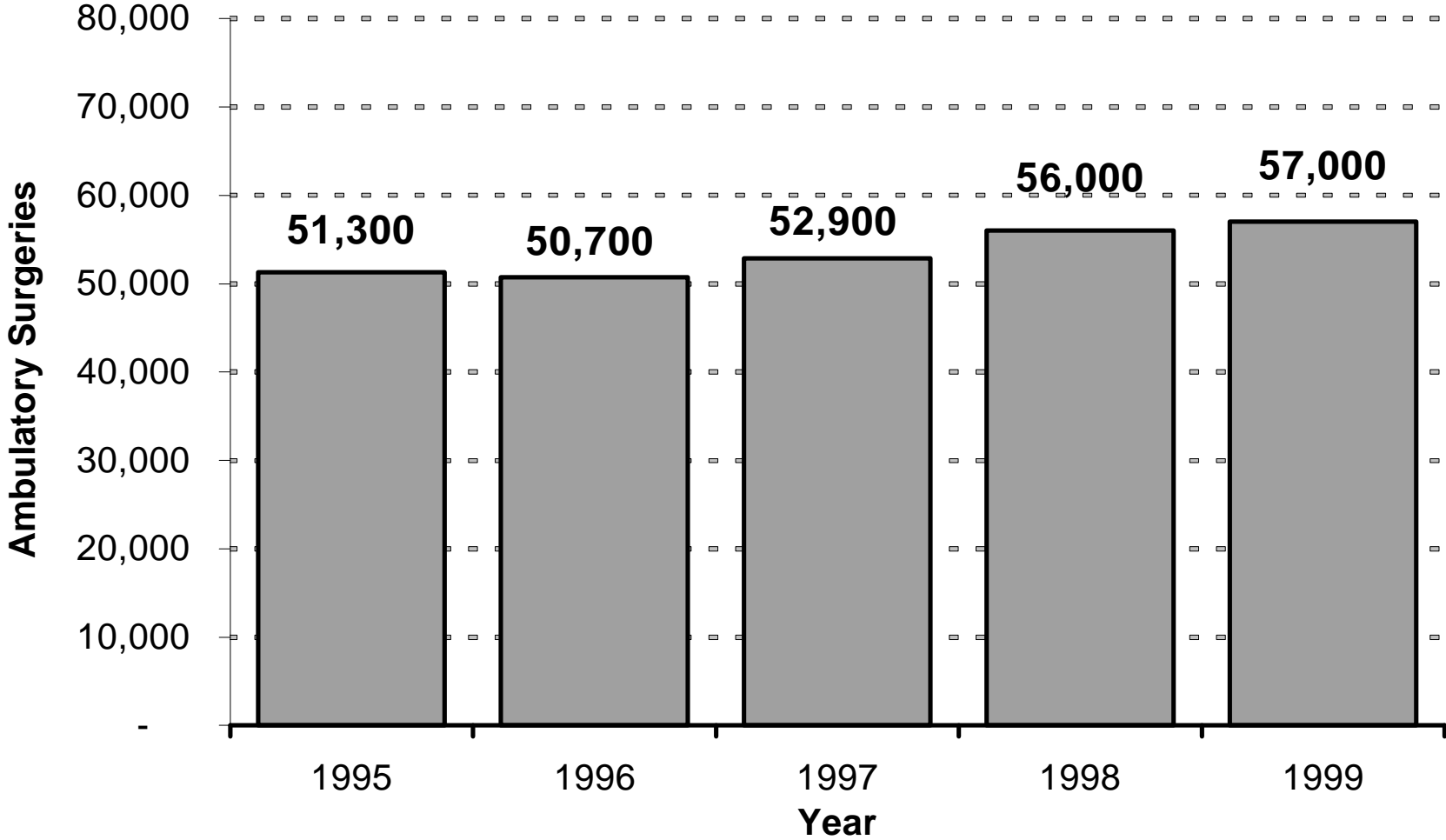
Five-Year Trend: 1995 - 1999



Note: Calculations are based on reported utilization figures for the eleven District of Columbia acute care non-federal hospitals.
Source: DCHA Monthly Utilization Survey

Ambulatory Surgeries

District of Columbia Acute Care Hospitals
Five-Year Trend: 1995 - 1999



Note: Calculations are based on reported utilization figures for the eleven District of Columbia acute care non-federal hospitals.
Source: DCHA Monthly Utilization Survey

Admissions and Patient Days

District of Columbia Hospitals

	Admissions			Patient Days		
	1998	1999	% Change	1998	1999	% Change
Acute Care Hospitals						
Children's National Medical Center	9,006	9,240	2.60%	56,368	53,918	-4.35%
Columbia Hospital for Women Medical Center	5,847	5,843	-0.07%	17,472	18,412	5.38%
District of Columbia General Hospital	9,580	10,129	5.73%	56,522	59,782	5.77%
George Washington University Hospital	11,785	11,485	-2.55%	58,121	60,199	3.58%
Georgetown University Hospital	14,710	13,402	-8.89%	84,706	75,667	-10.67%
Greater Southeast Community Hospital	11,139	9,767	-12.32%	75,088	66,803	-11.03%
Hadley Memorial Hospital	1,627	1,534	-5.72%	12,705	12,056	-5.11%
Howard University Hospital	11,695	11,407	-2.46%	80,882	82,037	1.43%
Providence Hospital	12,317	11,963	-2.87%	81,827	83,567	2.13%
Sibley Memorial Hospital	10,581	10,584	0.03%	56,618	57,705	1.92%
Washington Hospital Center	37,128	38,197	2.88%	214,046	221,956	3.70%
SUBTOTAL	135,415	133,551	-1.38%	794,355	792,102	-0.28%
Other Hospitals						
MedLINK Hospital at Capitol Hill	268	232	-13.43%	9,217	9,852	6.89%
National Rehabilitation Hospital	1,610	1,679	4.29%	34,025	36,280	6.63%
Psychiatric Institute of Washington, D.C.	1,490	1,401	-5.97%	23,007	23,811	3.49%
Saint Elizabeths Hospital/CMHS	2,420	2,084	-13.88%	266,647	234,570	-12.03%
Veterans Affairs Medical Center	6,008	6,105	1.61%	49,727	47,615	-4.25%
Walter Reed Army Medical Center	11,471	10,518	-8.31%	72,595	65,147	-10.26%
SUBTOTAL	23,267	22,019	-5.36%	455,218	417,275	-8.34%
GRAND TOTAL	158,682	155,570	-1.96%	1,249,573	1,209,377	-3.22%

Source: DCHA Monthly Utilization Survey

Emergency Room and Ambulatory Surgeries

District of Columbia Hospitals

	Emergency Room Visits			Ambulatory Surgeries		
	1998	1999	% Change	1998	1999	% Change
Acute Care Hospitals						
Children's National Medical Center	48,543	48,863	0.66%	3,846	4,116	7.02%
Columbia Hospital for Women Medical Center	N/A			4,197	3,981	-5.15%
District of Columbia General Hospital	51,627	51,956	0.64%	1,732	2,173	25.46%
George Washington University Hospital	41,928	43,439	3.60%	5,813	5,740	-1.26%
Georgetown University Hospital	21,547	21,777	1.07%	6,945	8,495	22.32%
Greater Southeast Community Hospital	38,915	37,302	-4.14%	3,230	2,865	-11.30%
Hadley Memorial Hospital	8,240	8,172	-0.83%	1,238	1,287	3.96%
Howard University Hospital	40,821	41,116	0.72%	4,566	4,669	2.26%
Providence Hospital	31,898	33,054	3.62%	7,289	6,746	-7.45%
Sibley Memorial Hospital	20,566	22,047	7.20%	6,306	6,240	-1.05%
Washington Hospital Center	51,425	55,513	7.95%	10,804	11,047	2.25%
SUBTOTAL	355,510	363,239	2.17%	55,966	57,359	2.49%
Other Hospitals						
Veterans Affairs Medical Center	15,657	13,540	-13.52%	2,584	2,965	14.74%
Walter Reed Army Medical Center	18,386	19,532	6.23%	11,286	11,605	2.83%
SUBTOTAL	34,043	33,072	-2.85%	13,870	14,570	5.05%
GRAND TOTAL	389,553	396,311	1.73%	69,836	71,929	3.00%

Note: Includes data for all hospitals providing emergency room services and ambulatory surgeries.
Source: DCHA Monthly Utilization Survey

Market Share of Acute Care Hospitals

District of Columbia
Calendar Year 1999

Acute Care Hospitals	Percentage of District Hospital's Totals			
	Admissions	Patient Days	Emergency Room Visits	Ambulatory Surgeries
Children's National Medical Center	6.92%	6.81%	13.45%	7.18%
Columbia Hospital for Women Medical Center	4.38%	2.32%	N/A	6.94%
District of Columbia General Hospital	7.58%	7.55%	14.30%	3.79%
George Washington University Hospital	8.60%	7.60%	11.96%	10.01%
Georgetown University Hospital	10.04%	9.55%	6.00%	14.81%
Greater Southeast Community Hospital	7.31%	8.43%	10.27%	4.99%
Hadley Memorial Hospital	1.15%	1.52%	2.25%	2.24%
Howard University Hospital	8.54%	10.36%	11.32%	8.14%
Providence Hospital	8.96%	10.55%	9.10%	11.76%
Sibley Memorial Hospital	7.93%	7.29%	6.07%	10.88%
Washington Hospital Center	28.60%	28.02%	15.28%	19.26%
TOTAL	100.00%	100.00%	100.00%	100.00%

Note: Calculations are based on reported utilization figures for the eleven District of Columbia acute care non-federal hospitals.

Source: DCHA Monthly Utilization Survey

Definition of Terms

Bed Capacity:	The average number of operating beds (staffed beds) during the reporting period.
Ambulatory Surgeries:	The number of scheduled surgical services provided to patients who do not remain in the hospital overnight.
Emergency Room Visits:	The number of visits to the hospital's emergency unit, including those resulting in admissions.
Inpatient Admissions:	The number of patients, excluding newborns, accepted for inpatient services during the entire reporting period.
Inpatient Days:	The number of adult and pediatric days of care, excluding newborn days of care, rendered during the entire reporting period.
Length of Stay:	Average number of days per inpatient admission during the reporting period, derived by dividing the number of inpatient days by the number of admissions.
Market Share:	The number of cases from an individual hospital divided by the aggregate number from all hospitals for a defined indicator (admissions, patient days, etc.)